



Relax on Oahu's North Shore with a luxury condo in Kuilima Estates at Turtle Bay

HAWAIIAN CONDO RESORTS, INC.

Contact Us

Our friendly and knowledgeable sales staff is available seven days a week. Hawaii Standard Time.

Call now to reserve your Hawaiian condo.

Toll Free from Continental U.S. & Canada

1-800-487-4505

or

Honolulu 808-949-4505

Fax: 808-944-2507

Hawaiian Condo Resorts, Inc.
1860 Ala Moana Boulevard, Suite #416
Wailana Office Building
Honolulu, HI 96815

Visit us on-line

<http://www.hawaiicondo.com>

email: bookings@hawaiicondo.com



Member—Hawaii Visitors and Convention Bureau

Member—Honolulu Board of Realtors



HAWAIIAN CONDO RESORTS, INC.



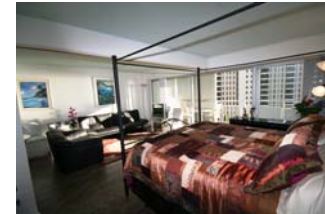
Aloha! Serving the needs of visitors to the Hawaiian Islands since 1980, we specialize in condo vacation rental accommodations.

Whether you are looking for a luxury ocean front suite or an economical studio efficiency, we offer prices you can afford with competitive daily and weekly rates at a fraction of comparable hotel room rates.



We specialize in the Waikiki area and are able to offer you a greater choice of condominiums than any other locally owned company. With hundreds of units in our inventory, we know we can help you find a great deal.

We also have units on the beautiful North Shore of Oahu and, if your vacation plans include the Neighbor Islands, we can provide your accommodations on Kauai, Maui, Molokai, and the Big Island of Hawaii.



All of our units are fully furnished for your convenience and include telephone, cable TV, kitchen or kitchenette, and air conditioning (Waikiki units). Most of the units have lanai's for your enjoyment of Hawaii's pleasant weather. All properties have swimming pools, laundry facilities, and parking is available. Stay with us and enjoy paradise.

Rent a studio with daily or weekly rates and enjoy exceptional resort amenities at the Ala Moana Hotel



The Ilikai and the Ilikai Marina look over the Ala Wai Yacht Harbor and the turquoise sea



Policies

PAYMENTS—We accept Visa, MasterCard, Discover Card, American Express, Traveler's Checks, Cashier's Checks and Money Orders (sorry, no personal checks). The total amount (rent, taxes, cleaning fees, additional charges for extra bedding, etc.) is due at check-in. Your confirmation/invoice receipt will reflect the total amount due.

DEPOSITS—All reservations require a Security Deposit. Deposits will be retained until you check out, the unit has been cleaned, and all keys and parking passes have been returned. Security Deposits are not applied to any balance due. Security Deposits will be available for refund as early as the day following check out but no later than 14 days after check out.

CANCELLATIONS—Administrative fees will apply to cancellations. The fee will vary according to the season, length of reservation and length of time between the cancellation and check in dates.

RESPONSIBILITY—Hawaiian Condo Resorts, Inc. is not liable for any injury, damage, irregularity, or delay. Hawaiian Condo Resorts, Inc. reserves the right to make any changes or alterations as deemed necessary.



Rates

2009 - 2010

Value Season: Apr - Nov

Peak Season: Dec - Mar

WAIKIKI STUDIOS

Premium Units

	DAILY RATES		WEEKLY RATES	
	VALUE	PEAK	VALUE	PEAK
Ala Moana Hotel	85-120	96-134	586-739	741-956
Royal Garden	94-121	111-138	542-632	634-728

Economy Units

Fairway Villa	69-85	83-111	427-507	568-673
Hawaiian Monarch	61-80	71-89	360-437	453-536
Ilikai Marina	76-93	89-117	454-551	590-707
Inn On The Park	63-81	76-100	390-467	496-595
Island Colony	66-90	79-113	402-510	534-638
Marine Surf	79-106	88-123	454-544	592-696

1 BEDROOMS

Premium Units

Ilikai	114-155	133-181	724-873	898-1084
Ilikai Marina	133-212	165-244	752-1445	970-1445
Waikiki Banyan	128-158	151-193	790-952	911-1098

Economy Units

Fairway Villa	85-112	101-127	558-659	649-757
Ilikai	89-117	104-137	570-728	691-856
Ilikai Marina	105-132	126-159	685-833	820-978
Island Colony	86-113	101-134	563-680	675-791
Pacific Monarch	100-132	119-151	611-770	740-934
Royal Kuhio	85-112	100-132	560-676	672-787
Waikiki Banyan	99-129	116-144	636-786	772-938

2 BEDROOMS

Premium Units

Ilikai	283-288	410-418	1633-1665	2864-2918
Royal Garden	202-244	220-263	1268-1433	1499-1672

Economy Units

Fairway Villa	118-166	142-193	764-922	925-1145
---------------	---------	---------	---------	----------

NORTH SHORE OAHU

Turtle Bay Studio	107-150	117-161	640-760	704-814
Turtle Bay 1 Bdrm	128-173	139-184	768-910	831-960
Turtle Bay 2 Bdrm	181-230	197-253	1087-1290	1183-1367

Visit www.hawaiiicondo.com for complete Properties & Rates listings

Dollar Saver

Need a rental car on your vacation in Hawaii? Our special rates are valid on all islands except Lanai and Hana, Maui. Use our Dollar Saver #44402 to make your dollar go farther with special rates from Hawaiian Condo Resorts & Dollar Rent-A-Car.



Regular Season Dollar Saver Rates

January 1-June 14, 2009; August 16-December 14, 2009

	Daily	Weekly
Economy 2/4 dr	\$29.00	\$159.00
Compact Deluxe 4 dr	\$31.00	\$170.00
Mid-size Sedan	\$36.00	\$198.00
Full-size Sedan	\$46.00	\$253.00
Jeep Wrangler	\$49.00	\$269.00
Convertible	\$58.00	\$319.00
Jeep Grand Cherokee	\$59.00	\$324.00
Mini Van (7 passenger)	\$55.00	\$302.00
Luxury Sedan	\$58.00	\$319.00

Summer Season Dollar Saver Rates

June 15-August 15, 2009

	Daily	Weekly
Economy 2/4 dr	\$35.00	\$192.00
Compact Deluxe 4 dr	\$36.00	\$198.00
Mid-size Sedan	\$42.00	\$231.00
Full-size Sedan	\$54.00	\$297.00
Jeep Wrangler	\$57.00	\$313.00
Convertible	\$67.00	\$368.00
Jeep Grand Cherokee	\$69.00	\$379.00
Mini Van (7 passenger)	\$64.00	\$352.00
Luxury Sedan	\$67.00	\$368.00

For **HOLIDAY RATES**, please call our Hawaii Reservations numbers.

Reservations

Use Dollar Saver #44402 for these special rates

On Oahu	1-808 944-1544
From Neighbor Islands	1-800-342-7398
From Continental U.S.	1-800-367-7006